

Design: Roy Fleetwood

Ecovision are luminaires for uniform façade illumination. The special wall washer optics are extremely wide beam in the horizontal plane but narrow beam in the vertical plane. This fans out the light which then grazes up the façade. This makes optimal use of the luminous flux on the area to be illuminated. The shallow profile of the luminaire makes it a very discrete product. Furthermore, the precise optics make it possible to achieve high levels of illumination with low power consumption.



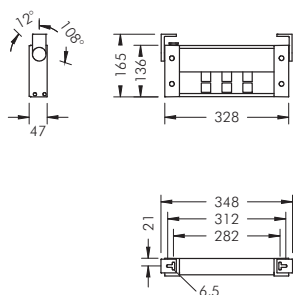
Place Stanislas, Nancy/France
Lighting design:
Communauté Urbaine de Grand Nancy



The luminous flux is concentrated in the vertical plane and grazes up the façade with hardly any light pollution.

Precise optics and a shallow housing with excellent heat dissipation properties characterise Ecovision.



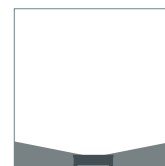
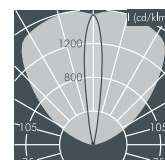
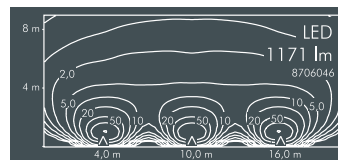


Ecovision Mini wall washer

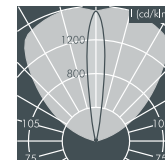
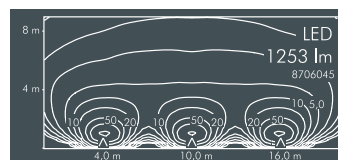
With high performance LEDs, integral temperature monitoring device, CRI: > 80, Colour tolerance: max. 2 SDCM
 Service life: L90/B10 > 50 000 h
 protection class I, IP65 \triangle \triangle \triangle , IK10
 housing made of extruded aluminium and corrosion-resistant die cast aluminium housing AlSi12, polyester powder coated, all exterior steel parts are stainless steel, polycarbonate cover, silicon gasket, closure by 4 stainless steel screws, mounting flange: 2 drilled holes \varnothing 6.5 mm, spacing 282 mm, tilt range 120°, PG11 cable gland, integral driver (AC/DC)

Ecovision Mini, wall washer

Part number*	Colour	Weight	Light source	Luminous flux	Beam angle γ (FWHM)	
8 706 046 009	black	2.3 kg	6 x LED 2.5 W (15 W) warm white (3000 K)	1171 lm	C 0 – 180	C 90 – 270
8 706 066 009	white				15°	103°
8 706 056 009	silver grey					



Part number*	Colour	Weight	Light source	Luminous flux	Beam angle γ (FWHM)	
8 706 045 009	black	2.3 kg	6 x LED 2.5 W (15 W) neutral white (4000 K)	1253 lm	C 0 – 180	C 90 – 270
8 706 065 009	white				15°	103°
8 706 055 009	silver grey					



Part number*	Description
. 1..	Dimmable luminaire (DALI)
. 2..	Dimmable luminaire (1-10 V)

* Luminaires with two cable glands available upon request

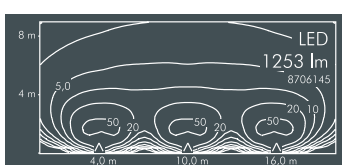
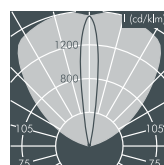
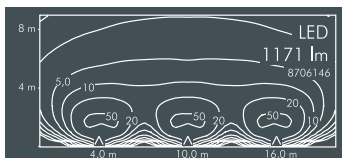
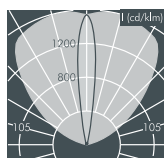
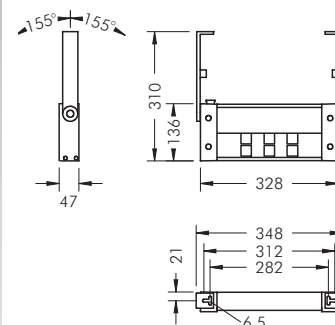
LED (see page 247)

Luminaires available in 2700 K and other colour temperatures upon request



Ecovision Mini wall washer with wall arms

With high performance LEDs, integral temperature monitoring device, CRI: > 80, Colour tolerance: max. 2 SDCM
 Service life: L90/B10 > 50 000 h
 protection class I, IP65 \triangle \triangle , IK10
 housing made of extruded aluminium and corrosion-resistant die cast aluminium housing AlSi12, polyester powder coated, all exterior steel parts are stainless steel, polycarbonate cover, silicon gasket, closure by 4 stainless steel screws, wall arms: 2 drilled holes \varnothing 6.5 mm, spacing 282 mm, tilt range 310°, PG11 cable gland, integral driver (AC/DC)



Ecovision Mini, wall washer with wall arms

Part number*	Colour	Weight	Leuchtmittel	Luminous flux	Beam angle γ (FWHM)	
8 706 146 009	black	2.8 kg	6 x LED 2.5 W (15 W)	1171 lm	C 0 – 180	C 90 – 270
8 706 166 009	white				15°	103°
8 706 156 009	silver grey					

Part number*	Colour	Weight	Leuchtmittel	Luminous flux	Beam angle γ (FWHM)	
8 706 145 009	black	2.8 kg	6 x LED 2.5 W (15 W)	1253 lm	C 0 – 180	C 90 – 270
8 706 165 009	white				15°	103°
8 706 155 009	silver grey					

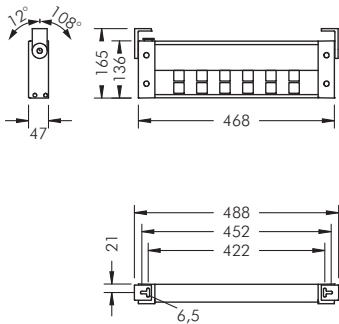
Part number*	Description
... .. 1 ..	Dimmable luminaire (DALI)
... .. 2 ..	Dimmable luminaire (1-10 V)

* Luminaires with two cable glands available upon request

LED (see page 247)

Luminaires available in 2700 K and other colour temperatures upon request



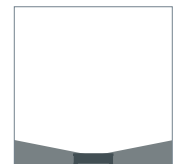
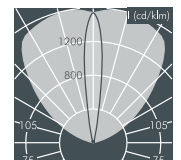
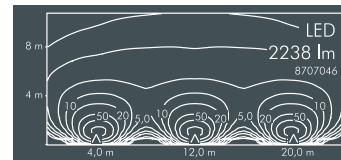


Ecovision wall washer

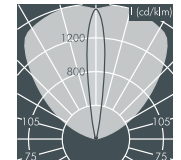
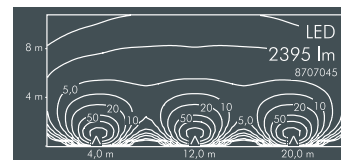
With high performance LEDs, integral temperature monitoring device, CRI: > 80, Colour tolerance: max. 2 SDCM
 Service life: L90/B10 > 50 000 h
 protection class I, IP65 ⚡⚡⚡, IK10
 housing made of extruded aluminium and corrosion-resistant die cast aluminium housing AlSi12, polyester powder coated, all exterior steel parts are stainless steel, polycarbonate cover, silicon gasket, closure by 4 stainless steel screws, mounting flange: 2 drilled holes Ø 6.5 mm, spacing 422 mm, tilt range 120°, PG11 cable gland, integral driver (AC/DC)

Ecovision, wall washer

Part number*	Colour	Weight	Light source	Luminous flux	Beam angle γ (FWHM)	
8 707 046 009	black	2.9 kg	12 x LED 2.4 W	2238 lm	C 0 – 180	C 90 – 270
8 707 066 009	white		[29 W]		15°	103°
8 707 056 009	silver grey		warm white (3000 K)			



Part number*	Colour	Weight	Light source	Luminous flux	Beam angle γ (FWHM)	
8 707 045 009	black	2.9 kg	12 x LED 2.4 W	2395 lm	C 0 – 180	C 90 – 270
8 707 065 009	white		[29 W]		15°	103°
8 707 055 009	silver grey		neutral white (4000 K)			



Part number*	Description
. 1..	Dimmable luminaire (DALI)
. 2..	Dimmable luminaire (1-10 V)

* Luminaires with two cable glands available upon request

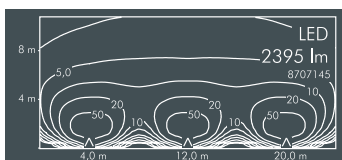
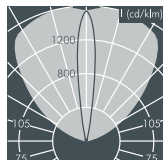
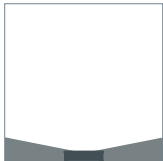
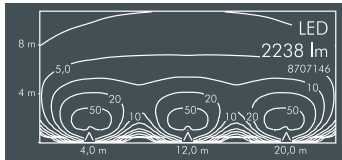
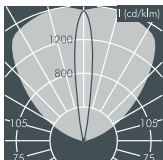
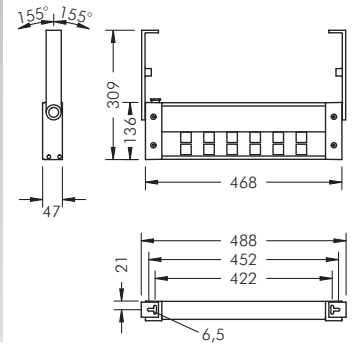
LED (see page 247)

Luminaires available in 2700 K and other colour temperatures upon request



Ecovision
wall washer with wall arms

With high performance LEDs,
integral temperature monitoring device,
CRI: > 80, Colour tolerance: max. 2 SDCM
Service life: L90/B10 > 50 000 h
protection class I, IP65 \blacklozenge \blacktriangle \blacktriangle , IK10
housing made of extruded aluminium and
corrosion-resistant die cast aluminium housing AlSi12,
polyester powder coated,
all exterior steel parts are stainless steel,
polycarbonate cover, silicon gasket,
closure by 4 stainless steel screws,
wall arms: 2 drilled holes \varnothing 6.5 mm,
spacing 422 mm, tilt range 310°,
PG11 cable gland, integral driver (AC/DC)



Ecovision, wall washer with wall arms

Part number*	Colour	Weight	Light source	Luminous flux	Beam angle γ (FWHM)	
8 707 146 009	black	3.4 kg	12 x LED 2.4 W (29 W)	2238 lm	C 0 – 180	C 90 – 270
8 707 166 009	white				15°	103°
8 707 156 009	silver grey					

Part number*	Colour	Weight	Light source	Luminous flux	Beam angle γ (FWHM)	
8 707 145 009	black	3.4 kg	12 x LED 2.4 W (29 W)	2395 lm	C 0 – 180	C 90 – 270
8 707 165 009	white				15°	103°
8 707 155 009	silver grey					

Part number*	Description
... .. 1 ..	Dimmable luminaire (DALI)
... .. 2 ..	Dimmable luminaire (1-10 V)

* Luminaires with two cable glands available upon request

LED (see page 247)

Luminaires available in 2700 K and other colour temperatures upon request

